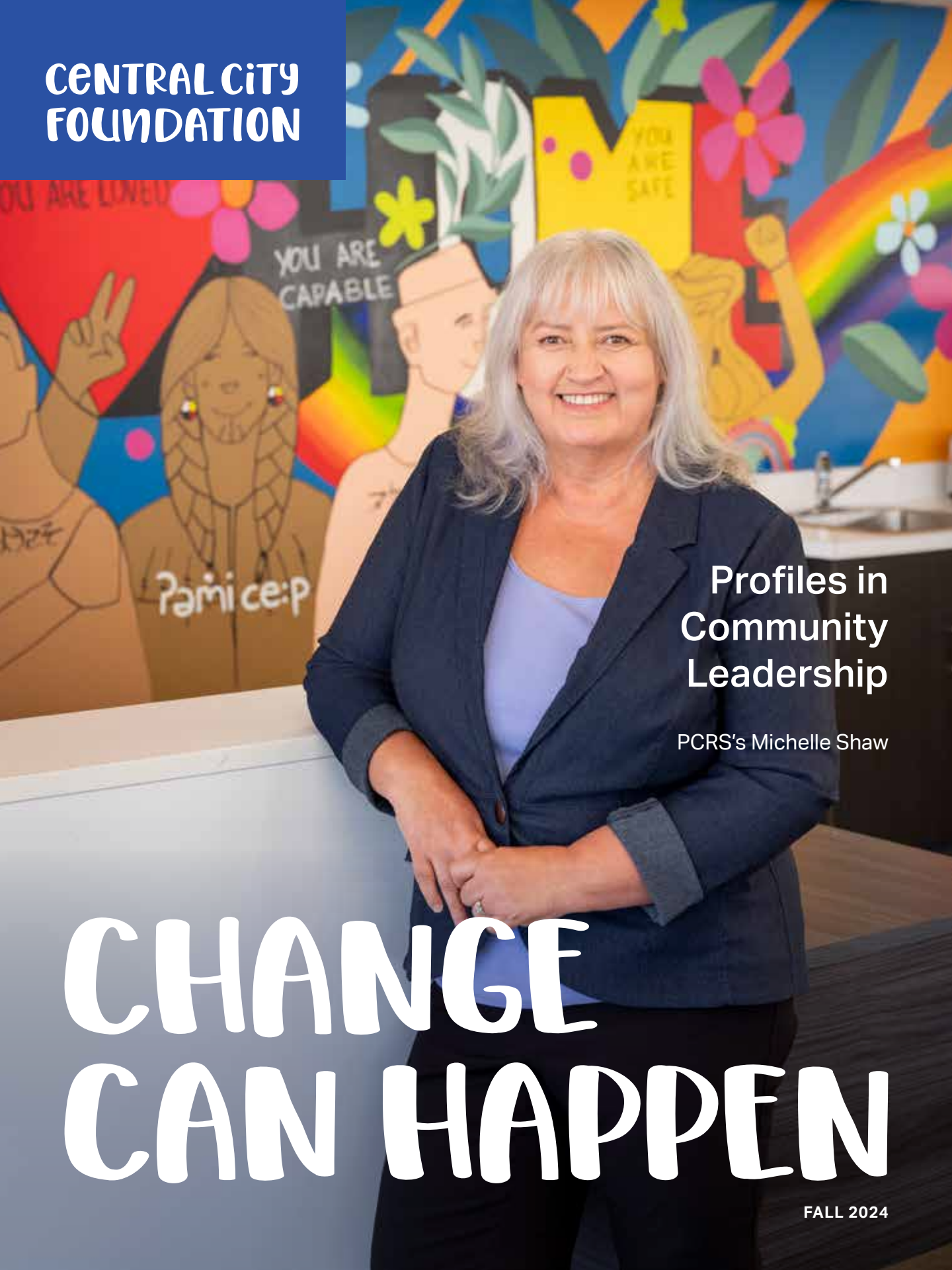


**CENTRAL CITY
FOUNDATION**



**Profiles in
Community
Leadership**

PCRS's Michelle Shaw

**CHANGE
CAN HAPPEN**

FALL 2024

CENTRAL CITY
FOUNDATION

ANNUAL FUNDRAISING CAMPAIGN 2024

With your support, we are helping to ensure our most vulnerable neighbours and friends have a roof over their heads, food in their bellies, cultural connections, employment and learning opportunities and access to harm reduction supports, including overdose prevention sites and treatment options. Together, we can continue to make change happen by investing in possibilities and hope for brighter futures for everyone.

Your gift to our annual campaign will have a lasting impact on those who need our support and help people in the inner city improve their lives.

\$1,000

will provide one day of comprehensive support services and help building a sense of community and belonging for our residents

\$700

will ensure access to harm reduction supports, including overdose prevention teams, detox supports and treatment options

\$250

will ensure access to life-saving cultural support led by Indigenous Knowledge Keepers and Community Elders

Please give generously to support Central City Foundation by donating at centralcityfoundation.ca

If you have any questions or would prefer to make an offline donation, please feel free to contact our office at 604.683.2263 or by email at development@centralcityfoundation.ca



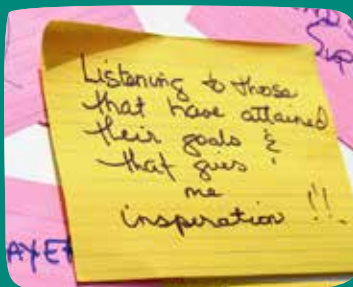
CHANGE CAN HAPPEN

For more than 100 years, Central City Foundation has been working here in Vancouver to build a community where everyone has access to health, well-being and opportunities to succeed.

Today, more than ever, we recognize there are people and groups who have been left behind by the systems and structures of our society. That's why we invest our donors' philanthropic gifts in innovative programs that truly make a difference—through social purpose real estate, grants and subsidies that uplift the people in our community. We are committed to removing barriers, creating opportunities and building capacity through community-led solutions where those directly facing an issue can ensure we are indeed making change happen.

PROFILES IN COMMUNITY LEADERSHIP

This year, we are once again celebrating examples of extraordinary community leadership and innovation from the organizations we walk alongside and support. These individuals and their organizations have demonstrated that change can happen in our community. As part of this celebration, we asked each of our profiled leaders to share their thoughts on leadership, community, and hope for a brighter future. To read more of these in-depth interviews, visit centralcityfoundation.ca.





MARIAM BOUCHOUTROUCH

Executive Director, Pacific Immigrant Resources Society

For several decades, Mariam has been of incredible service to immigrant women, their children, and their families. She has made a tremendous difference in community services through leading organizational change, developing innovative programs and fearless advocacy. Committed to supporting newcomer women on their journey to belonging, Mariam has helped change the landscape of settlement services through creative employment and training opportunities and successful social enterprises.

“Collaborations with partners like Central City Foundation are key to our work. We firmly believe that together, we can achieve more than we can on our own. We are deeply grateful to Central City Foundation for extending our reach and amplifying our impact. These partnerships play a crucial role in making a real, tangible difference in the lives of the women we serve.”

– Mariam Bouchoutrouch

OLiViA JiM

Executive Director, Helping Spirit Lodge Society

For almost 20 years, Olivia has worked tirelessly to end violence against Indigenous women and girls. With an approach rooted in building supportive relationships and multiple pathways for reconnection with their community, Olivia and Helping Spirit Lodge Society have demonstrated an unwavering commitment to holistic, Indigenous-led programs and services that are working to end family violence. Olivia's leadership has helped positively change the lives of many, many women and their children.

"We see tremendous value in developing relationships and collaboration in our work with organizations like Central City Foundation by focusing on the big picture: the betterment of our children, families, and individuals seeking help in finding affordable housing in the Lower Mainland. Helping Spirit Lodge Society is very grateful for the opportunity to work with Central City Foundation and wholeheartedly supports the Foundation's commitment to making a positive difference in the lives of Indigenous women and girls."

– Olivia Jim





SHANNON SKILTON

Executive Director, Chrysalis Society

Shannon has been providing unwavering support for women challenged with addictions for over thirty years. In addition to leading the creation of numerous innovative programs and supports, Shannon has also been a singularly consistent voice for the unique intersectional and complex needs of women and has changed the landscape of addiction services in this province. Building on the legacy of caring that is the backbone of Chrysalis Society, Shannon has helped change lives for so many women in our community.

“Support from Central City Foundation has meant everything to the women we serve and to Chrysalis. Central City Foundation has supported us with renovations at our homes. With over 100 clients a year, our homes experience a lot of wear and tear and with the support of the Central City Foundation, the women in our care feel valued and worthy of a safe, clean and beautiful environment.”

– Shannon Skilton



MICHELLE SHAW

*Director of Operations – Fraser South, Pacific
Community Resources Society*

For almost three decades, Michelle has been devoted to helping young people and families in our local communities. Her leadership at PCRS has led to the creation of many innovative and inclusive services that meet young people where they are at and help them improve their health and reclaim their sense of purpose and passions. Michelle continues to ensure excellence in PCRS programs such as the new Foundry Surrey and that the voices of community are heard in government through her role as co-chair of the Surrey Vulnerable Women and Girls Working Group.

“Support from Central City Foundation has been instrumental for PCRS to enhance our capacity to deliver essential services and programs aimed at helping youth, families, and individuals facing challenges in the community. Our partnership allows us to be creative. The funding and resources provided by Central City Foundation help PCRS expand its outreach, improve service delivery, and develop innovative programs. Strengthened services can lead to better outcomes for clients, ultimately improving the community's well-being.”

– Michelle Shaw

CHRISTOPHER LIVINGSTONE

Board Member, Aboriginal Front Door Society

NORM LEECH

Board President, Aboriginal Front Door Society



We are excited to profile the innovative work of Aboriginal Front Door Society. Through tremendous efforts, they have created a welcoming place in the DTES where Indigenous people can go for a time out, access supports and participate in various activities. Understanding that surviving trauma reveals all the amazing gifts and talents needed for that survival, AFDS provides a culturally safe place where people can connect with traditional Indigenous culture, teachings and ceremonies as part of their healing journey.

Aboriginal Front Door is an inspiring example of how hope can thrive in a community where folks are facing tremendously challenging conditions.

“How would we describe the value of developing relationships and collaboration in our work and organizations like Central City Foundation? Invaluable and Immeasurable and Essential and Rewarding.”

– Norm Leech



OUR DONORS ARE INVESTING IN THE LOCAL COMMUNITY

When you donate to Central City Foundation, you can feel confident that you are investing in effective programming and services. Not only do we walk alongside social service organizations every day, but we also build long-lasting relationships with our community partners. This ensures our donors' values are honoured with each grant made.

Our approach to grant-making is rooted in our long history of nurturing innovative community-led initiatives that address systemic issues affecting the inner city's population. By funding projects that are designed by and for the community they serve, our donors can be sure their investment is providing the support and resources our most vulnerable neighbours need on their individual journeys to well-being.

Some of our grants have included support for organizations such as:

Dugout Drop-in Centre Society

Central City Foundation provides an annual grant to The Dugout in support of their community living room, which is a crucial place for many folks to break the isolation of life in the inner city. The Dugout employs members of the Downtown Eastside community and mobilizes volunteers from across our city, including 20-25 volunteer drivers who pick up donated food from various grocery stores. The Dugout is committed to finding ways to offer food, support and friendship each day.

Mission Possible

Mission Possible is a non-profit organization that provides opportunities for people in the inner city to find a renewed sense of purpose through meaningful work. Participants receive training, coaching and transitional employment opportunities that build the capacity and confidence necessary to sustain employment. Central City Foundation has provided numerous grants for equipment to support Mission Possible and MP Enterprises.

Downtown Eastside Women's Centre

Downtown Eastside Women's Centre provides a safe, welcoming environment for women who live and work in the DTES. Their services include everything from essential meals, counselling and advocacy to innovative programs that help nurture and empower their members. Central City Foundation has funded many renovations and improvements to the kitchen and other facilities at the Centre to ensure the space is safe and well-used by the hundreds of women who come their doors.



Central City Lodge

Central City Lodge is a complex care facility built by Central City Foundation in the early 1990s to serve the inner city and includes a unique Addiction Recovery Program providing a positive environment to promote healing that is physically and culturally safe, dignified, and empowering. We continue to provide grants and support for the Lodge and its life-enhancing programs.

SOCIAL PURPOSE REAL ESTATE

What is social purpose real estate, and why is it an important part of our work?

Social Purpose Real Estate (or SPRE) refers to a property owned, leased or developed specifically to support the needs of the community. Providing secure tenure and deeply subsidized rentals to non-profit organizations helps them put their financial resources into programming that supports people on their journeys to well-being.

Central City Foundation is a founding force in Canada's Social Purpose Real Estate movement. A recent independent evaluation concluded that for every \$1 we invest in our SPRE properties, an impressive \$3.90 is generated in social benefit. Our investments in properties offer more than just the programming within them, they create a foundation for community, stability and a place where change happens. Critical infrastructure for our community partners supports our inner city's most vulnerable populations, including those living in extreme poverty, Indigenous peoples, women, children and youth. Our properties allow community organizations to offer essential services like housing, mental and physical health supports, addiction recovery, employment training and more.



We made our first investment in SPRE in 1910, building the Central City Mission shelter and support centre at 233 Abbott St. in Vancouver, and we've been providing safe, affordable housing ever since. Most recently, through the Central City Housing Society, we have been building connections and community for our tenants and program participants at our two buildings, the Abbott and the Cosmopolitan. At the innovative Cosmo Women's Transitional Housing Program, dedicated front-line workers with lived and learned experience support our program participants on their journeys to stable, permanent housing and well-being.

Today, through valued partnerships with organizations like Vancouver Aboriginal Health Society, Aunt Leah's Place and the Okanagan Nation Alliance, Central City Foundation's SPRE portfolio also includes a property with services for Indigenous children and families, a health collective for women, a property which houses young women and their children along with providing support services for youth in foster care, and a residential treatment program for youth in the Okanagan area.

By using social purpose real estate as part of our commitment to driving social change, we continue to play a pivotal role in transforming the landscape of our communities. We are helping to build a future where every individual has the opportunity to not only improve their lives but thrive.

CENTRAL CITY FOUNDATION

206-304 W Cordova St
Vancouver BC V6B 1E8

centralcityfoundation.ca

On the traditional and unceded ancestral homelands of the
xwməθkwəy̓əm (Musqueam), Skwxwú7mesh (Squamish), Stó:lō
and Səl̓ilwətaʔ / Selilwitulh (Tseil-Waututh) Nations.